

Kangourou Italia - LCCI Gara dell'1 marzo 2012



Categoria GREY KANG ORDINARIA

Per studenti della classe seconda
della Scuola Secondaria di Secondo grado

Categoria WALLABY SPECIALE

Per studenti della classe terza
della Scuola Secondaria di Primo Grado

JET (Junior English Test) LEVEL FOUR

READING TEST

TEMPO MASSIMO CONCESSO: 80 MINUTI

YOU NEED:

- ◆ This question paper
- ◆ An answer sheet
- ◆ A black pen

You may NOT use a dictionary

**Do NOT open this paper until you are told to do so.
Try to answer ALL the questions.**

INSTRUCTIONS:

- ◆ Read each question carefully.
- ◆ Select the correct answer and then mark your selection on your answer sheet
- ◆ Only mark **one** answer for each question.

Questa prima parte è formata da 40 domande a scelta multipla.

Il punteggio massimo ottenibile, relativamente a questa parte, è di 100 punti.

Part One

Read this article on Cheese then answer the questions on the following page by choosing True (A), False (B) or Not in Text (C). Mark your answers on your answer sheet.

Cheese Did you know...?

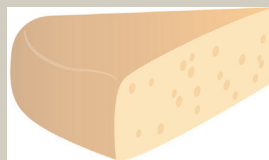
When milk turns sour or curdles, it separates into a thin, runny liquid and white, fatty lumps. The liquid is called whey and the lumps are called curds. The curds are used to make cheese.



Salt is added to take whey from the curds and improve the flavour.

Cheddar, one of England's oldest cheeses, is made from cow's milk. Cheddar is ripened for up to two years. The French cheese, Brie, on the other hand, takes only a month to ripen.

It takes approximately ten litres of milk to make one litre of cheese.



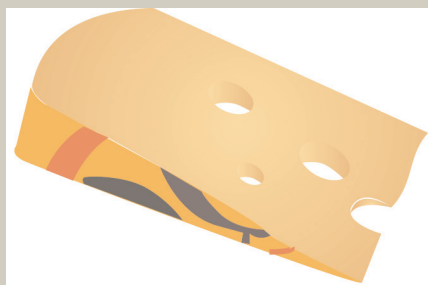
Swiss cheese is full of holes. Bacteria in the cheese give off bubbles of gas, which make the holes. Thanks to cartoons, many children think the holes are made by mice!

Cheese-makers often combine cheeses to make new ones. Brie is combined with Gorgonzola to make Cambazola; Norwegian Jarlsberg comes from Dutch Gouda and Swiss Emmental.

The stomachs of some dairy animals contain a substance called rennin which is used in cheese-making. If you add rennin to milk, the milk will separate into curds and whey, as eaten by Little Miss Muffet in the famous old nursery rhyme.

The more whey that is squeezed out of the cheese, the harder the cheese becomes.

The USA is the biggest producer of cheese, the majority of its production being mozzarella for pizzas.



Greece is the world's biggest consumer of cheese, with 27.3 kg eaten by the average Greek in 2003. The French were the second biggest cheese-eaters with 24kg per person. Italy's consumption of cheese nearly tripled between 1970 and 2003 and China's annual cheese sales doubled from 1996-2003.

Part One (continued)

1. It takes more time to make Brie than it does to make Cheddar.

A = True B = False C = Not in Text

2. The British eat more cheese than the Americans do.

A = True B = False C = Not in Text

3. Cambazola is made from Gorgonzola and Gouda.

A = True B = False C = Not in Text

4. About ten litres of milk are used to make one litre of cheese.

A = True B = False C = Not in Text

5. If you add salt to curds, it improves the flavour.

A = True B = False C = Not in Text

6. Mice cause the holes in Swiss cheese.

A = True B = False C = Not in Text

7. Most of the cheese made in the USA is for pizzas.

A = True B = False C = Not in Text

8. Cheddar cheese uses the greatest amount of rennin.

A = True B = False C = Not in Text

9. Italians eat even more cheese than they used to.

A = True B = False C = Not in Text

10. This article is about the history of cheese-making.

A = True B = False C = Not in Text

Part Two

Choose the word(s) closest in meaning to these words from the article on Soap. Mark your choice (A, B, C or D) on your answer sheet.

11. separates A joins
 B unites
 C turns
 D splits
12. squeezed A pointed
 B pressed
 C worked
 D leaked
13. approximately A nearly
 B exactly
 C more than
 D less than
14. ripened A stored
 B matured
 C cooked
 D frozen
15. annual A daily
 B weekly
 C monthly
 D yearly

Part Three

Read the article and choose the missing word for each of the numbered gaps. Mark your answers (A, B, C or D) on your answer sheet.

Mercury

Mercury, or quicksilver, is a metal ¹⁶ _____ is liquid at normal temperatures. It must be cooled to -39 degrees before it becomes solid. Mercury is found in combination with other substances in the ground ¹⁷ _____ have to be refined before the mercury can be extracted. Mercury has some useful and peculiar characteristics. In its liquid form it can be poured out of a jug and yet leave the inside of the jug completely dry.

Mercury is also the name of the planet closest to the sun. Its name comes from the Romans ¹⁸ _____ named it after the messenger of the Roman gods. The planet Mercury, ¹⁹ _____ surface is very similar to that of the moon was, until recently, thought to be the smallest planet in our solar system: now it is the planet Pluto ²⁰ _____ is thought to be the smallest.

16. **A** who **B** whose **C** that **D** what
17. **A** whose **B** which **C** who **D** whom
18. **A** what's **B** who's **C** whose **D** who
19. **A** whose **B** whom **C** who **D** which
20. **A** whose **B** that **C** who **D** what

Part Four

Fill the gaps in the following sentences selecting the correct missing word (A, B, C or D). Mark your answers on your answer sheet.

21.

It's rather tasteless. If I were you I _____ add more salt.

- A** can **B** could **C** must **D** would

22.

She told me she _____ get in because she didn't have her key.

- A** couldn't **B** must **C** has to **D** shouldn't

23.

The children were warned that they _____ behave themselves at the dinner table.

- A** can't **B** has to **C** must **D** shouldn't

24.

If I don't eat something soon, I _____ faint from hunger.

- A** would **B** will **C** can **D** must

25.

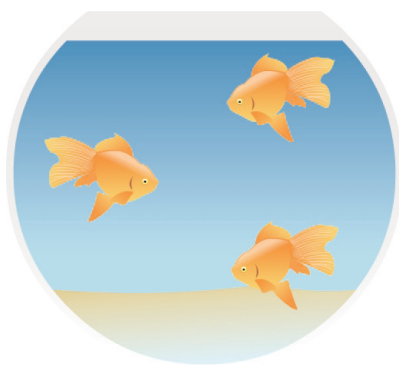
You shouldn't give chicken bones to dogs! You _____ be mad!

- A** should **B** must **C** will **D** could

Part Five

Read this information about Goldfish. Select the missing word (A, B, C or D) for each of the numbered gaps. Mark your answers on your answer sheet.

Goldfish



Here are a few things you may not know ²⁶ _____ goldfish. Did you know that they have been kept in Chinese homes ²⁷ _____ over a thousand years? They became widespread ²⁸ _____ many other countries in the seventeenth century, when travelling Europeans brought goldfish back to Europe ²⁹ _____ them. It became traditional for a married man to give a goldfish ³⁰ _____ his wife on their first wedding anniversary as a symbol of prosperity.

26. A for B about C of D with
27. A during B for C since D under
28. A at B on C onto D in
29. A to B onto C on D with
30. A to B for C at D with

Part Six

Select the correct answers (A, B, C or D) to fill the gaps in the conversation. Mark your answers on your answer sheet.



While ³¹ _____ television last night ³² _____ an advertisement for a new theme park.

31. A I watched C I have watched
 B watch D I was watching
32. A I have seen C I had seen
 B I saw D I was seeing

Really? Tell me about it.



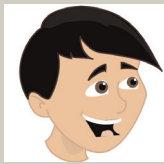
It's called The Haunted Garden and it has lots of spooky rides. It's in the grounds of a castle that ³³ _____ in the sixteenth century. The great thing about it is that it's open at night so ³⁴ _____ on all the rides in the dark.

33. A built C has been built
 B was built D had been built
34. A you can go C you shall go
 B you will go D you have been

That sounds really cool! ³⁵ _____ on a roller-coaster in the dark before!

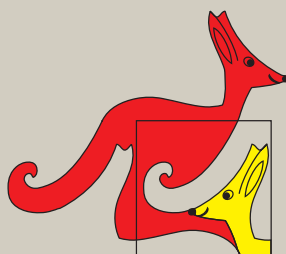


35. A I don't go C I have never been
 B I never went D I had never been



Me neither. When my dad gets home ³⁶ _____ him if we can go there for my birthday.

36. A I am asking C I'm going to ask
 B I have asked D I asked



Kangourou Italia - LCCI Gara dell'1 marzo 2012



Categoria GREY KANG ORDINARIA
Per studenti della classe seconda
della Scuola Secondaria di Secondo grado

Categoria WALLABY SPECIALE
Per studenti della classe terza
della Scuola Secondaria di Primo Grado

JET (Junior English Test) LEVEL FOUR

LISTENING TEST

TEMPO STIMATO CIRCA 20 MINUTI

YOU NEED:

- ◆ This question paper
- ◆ An answer sheet
- ◆ A black pen

You may NOT use a dictionary

Do NOT open this paper until you are told to do so.
Try to answer ALL the questions.

INSTRUCTIONS:

- ◆ Listen to each question carefully.
- ◆ Select the correct answer and then mark your selection on your answer sheet
- ◆ Only mark **one** answer for each question.

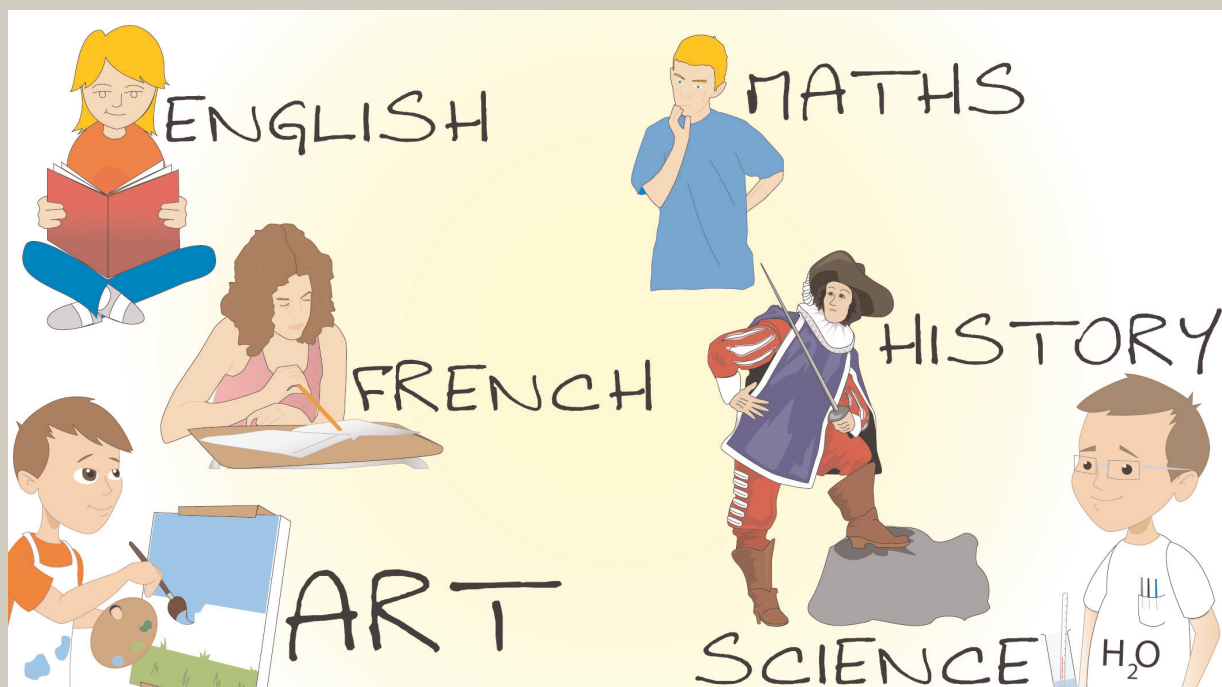
Questa seconda parte è formata da 20 domande a scelta multipla.

Il punteggio massimo ottenibile, relativamente a questa parte, è di 100 punti.

Eeguire "Track 3" del disco 1.

Part One

Read the questions, listen to the recording and select true (A), false (B) or unknown (C).



41. There are three compulsory subjects.
A = True B = False C = Unknown
42. Jamie doesn't want to study French any more.
A = True B = False C = Unknown
43. Jamie went on a school trip to France last year.
A = True B = False C = Unknown
44. He'd prefer to study Italian next year.
A = True B = False C = Unknown
45. Mrs Sanchez will be in the staff room at lunchtime.
A = True B = False C = Unknown
46. Jamie wants to do a degree in Business Studies.
A = True B = False C = Unknown
47. Jamie's dad has been teaching at Cheltenham College for the last ten years.
A = True B = False C = Unknown
48. His mum teaches Art at the same college.
A = True B = False C = Unknown
49. Jamie got high marks for his art project.
A = True B = False C = Unknown
50. Jamie is captain of the school football team.
A = True B = False C = Unknown

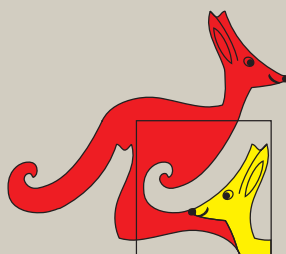
Part Two

Read each question, listen to the recording and select the correct answer (A, B, C or D). Mark your answers on your answer sheet.

51. When was Yellowstone National Park established?
- A 1782
 - B 1827
 - C 1872
 - D 1928
52. What is the approximate area of Yellowstone National Park?
- A over 90,000 square kilometres
 - B just under 90,000 square kilometres
 - C more than 9000 square kilometres
 - D close to 9000 square kilometres
53. What is the depth of Yellowstone Lake?
- A 22 metres
 - B 122 metres
 - C 2322 metres
 - D 2357 metres
54. Which of these statements about the Yellowstone Caldera is false?
- A Yellowstone Lake is at its centre.
 - B It is a supervolcano.
 - C It is still active.
 - D It last erupted two million years ago.
55. Which of these statements about Old Faithful is true?
- A It is the most famous geyser in the world.
 - B It is the oldest geyser in the world.
 - C It is the biggest active geyser in the world.
 - D It is the hottest geyser in the world.
56. How many geysers are there in Yellowstone Park?
- A 200
 - B 300
 - C 350
 - D 450

Part Two (continued)

57. Which animals were imported from Canada?
- A grizzly bears
 - B elk
 - C wolves
 - D wolverines
58. Which animals are the most numerous in Yellowstone Park?
- A grizzly bears
 - B elk
 - C wolves
 - D wolverines
59. What is the most common cause of forest fires in Yellowstone Park?
- A lightning strikes
 - B people starting fires on purpose
 - C people starting fires by accident
 - D volcanic activity
60. Which kind of tree is protected from fire by the thickness of its bark?
- A Lodgepole Pine
 - B Aspen
 - C Douglas Fir
 - D Whitebark Pine



Kangourou Italia - LCCI Gara dell'1 marzo 2012



Categoria GREY KANG ORDINARIA

Per studenti della classe seconda
della Scuola Secondaria di Secondo grado

Categoria WALLABY SPECIALE

Per studenti della classe terza
della Scuola Secondaria di Primo Grado

JET (Junior English Test) LEVEL FOUR

WRITING TEST

TEMPO MASSIMO CONCESSO: 30 MINUTI

SONO NECESSARIE:

- ◆ Questa pagina del libro dei quesiti
- ◆ Un foglio a righe, consegnato insieme alla scheda risposte
- ◆ Una penna nera

You may NOT use a dictionary

INSTRUCTIONS:

- ◆ Write about 100 words on the following topic:

**Should scientists be allowed
to experiment on animals?**